



Marine guide

FRP tooling and boat construction



”

“Scott Bader’s unique, innovative products have allowed us to keep our competitive edge. We have been able to make valuable savings both in time and labour costs, without compromising on quality.”

Chris Gates, Operations Director, Princess Yachts



OVERVIEW

WELCOME TO MARINE TECHNOLOGY EXCELLENCE

Scott Bader has been the undisputed expert in marine technology for 70 years and continues to drive future innovations today. It pioneered the use of fibre reinforced plastic (FRP) in the marine industry and it was a Scott Bader resin that was used in the first ever composite boat in 1951 – the Tod 12 Dinghy¹.

The Crystic[®] product range is the most widely used by the world’s leading boat builders with a reputation not only for creating exceptional aesthetics and producing unmatched performance, but also for providing long term protection from weathering. This is in conjunction with Scott Bader’s structural adhesives, Crestamould[®] matched tooling systems and our industry-leading technical support service makes us a winning formula.



CONTENTS

Overview

Welcome to marine technology excellence	3
Crestamould [®] Matched Tooling System	6
Crystic [®] Matched Performance Systems	8
Adhesives	
Crestomer [®]	10
Crestafix [®]	12
Crestabond [®]	14
Crystic [®] Mouldguard	17
GelTint	18
Get in touch	20

¹ <http://www.cvrda.org/dinghydata/tod-12ft/>

ACHIEVING ENVIRONMENTAL STANDARDS

We understand that achieving latest emission standards is key to a sustainable future which is why our manufacturing operations and general working environments are second to none. By developing bio-based resins for the marine industry we look after our customers as well as the world.

Scott Bader was again ahead of its time when we introduced a low styrene emission resin over 40 years ago and the successes have been coming ever since. In 2020 we were delighted to announce that our Crestabond® M7-05 and M7-15 structural adhesives were awarded NK certificates in accordance with MED 2014/90/EU.

Today we have a whole range of products and processes that reduce the environmental impact of composites, including closed mould systems, which virtually eliminate polluting emissions, and the innovative application of Crestomer structural adhesives in bulkheads.

QUALITY ASSURED

Before a product goes to market it will have completed Scott Bader's rigorous development programme. All new gelcoats are tested under the most extreme conditions, including 12 months continuous exposure in Florida in order to satisfy the accelerated weather programs and blistering tests.

Once tested, each batch of gelcoat manufactured at Scott Bader has to pass stringent quality control tests that ensure consistent quality, colour, surface finish and handling. Ultimately, products are then approved by the key industry standards as appropriate, such as Lloyds, ClassNK, DNV-GL and RINA. Scott Bader's industry leading technical support team are available to assist customers with technical advice and help them to achieve their own approval programs.

”

“Gaining these MED approvals (Crestabond® M7-05 and M7-15) is a significant step forward for the growth of our structural adhesives in the ship building industry. We are delighted to offer industry leading MED approved structural adhesives to the ship building industry worldwide.”

Ingrid Skalleberg,
Scott Bader's Group Product Manager for Adhesives

WORKING IN PARTNERSHIP

Scott Bader is a Commonwealth company that is owned by its employees rather than shareholders, meaning it cannot be taken over or forced to merge with other companies. Customers can feel confident that Scott Bader are committed to long term working partnerships and will be designing and supplying composite products for years to come.

Our marine range of high performance products are specifically designed to meet the ever changing needs of our customers. Scott Bader boasts its own in-house laboratory testing facilities allowing for a rapid response to customer requests.

” HEAR WHAT CUSTOMERS SAY

“Hi Spec Plastics have been in business since 1968 designing and manufacturing liferaft containers. Over the years we have tried and tested a number of different tooling gelcoats but none have exhibited the performance excellence of Crystic® 14PA. One of the moulds produced using 14PA has had over 4,000 lifts over a number of years with no evidence of dulling, crazing or cracking of the gelcoat surface. Crystic® 14PA has exceeded all our expectations for a tooling gelcoat and we strongly suggest you try it.”

Gary Bates, Managing Director, Hi Spec Plastics

“We have been working with Scott Bader for many years and are extremely happy with the level of service we receive. Scott Bader has the best products on the market for the marine industry which in turn helps us ensure our products are of the highest quality.”

Fairline Boats

“Scott Bader's unique, innovative products have allowed us to keep our competitive edge. We have been able to make valuable savings both in time and labour costs, without compromising on quality.”

Chris Gates, Operations Director, Princess Yachts

“Scott Bader has been supplying Chantier AMEL for 20 years. The technical service and the quality of products meet our requirements to our utmost satisfaction.”

Monsieur Jacky MALEIX, Production Manager, Chantier AMEL



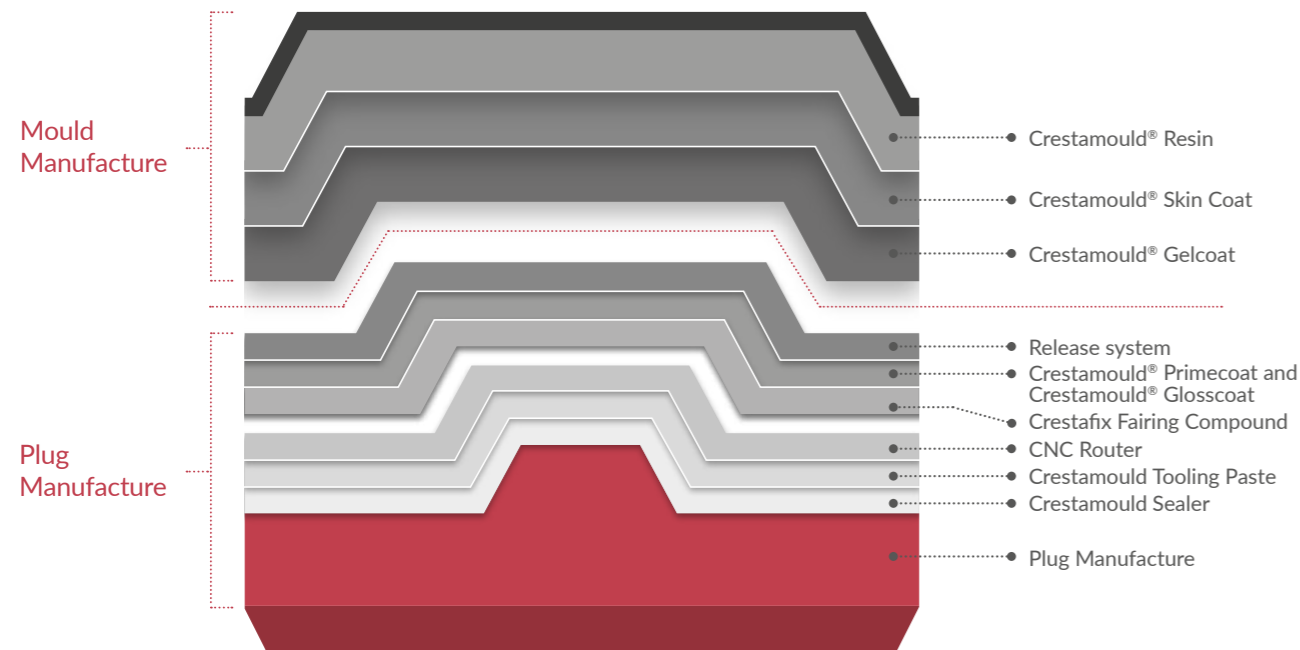
CRESTAMOULD®

Matched Tooling Systems

The quality of your mouldings can only be as good as the quality of your mould, making it essential that you use an appropriate and quality tooling system, like Scott Bader's Crestamould® Matched Tooling System.

Using chemically matched products that work together, the high-performance Crestamould® Matched Tooling System delivers an excellent standard of mould production with great benefits to your project:

- Significantly increases the lifetime of moulds in production
- Enhanced gloss finish and gloss retention compared to competitive products
- Easy to apply to required thickness
- Trouble-free de-moulding, even complicated shapes
- Reduced water marking
- Reduced fibre print through for a much smoother gelcoat surface
- Fast mould production



MOULD MANUFACTURE

Crestamould® Resin

Crestamould® Rapid Tooling Resin (RTR) 4010PA is a rapid tooling resin which incorporates outstanding handling properties, lower viscosity, improved shrinkage control and is catalysed with standard MEKP catalyst. It enables faster mould making and eliminates surface distortion.

Crestamould® Skin Coat

Crestamould® Skin Coats VE679PA and VE690PA are pre-accelerated thixotropic DCPD modified vinylester resins that have been developed as a skin coat in tooling applications. They have excellent blister resistance and reduced print through.

Crestamould® Gelcoat

Crestamould® Gelcoat 15PA is a superior performance vinylester tooling gelcoat for making moulds designed to have a long service lifetime and retain high gloss levels after multiple pulls. It is easy to apply and achieves good coverage. There is no gassing of the gelcoat ensuring a very low porosity surface and it cures with a standard MEKP catalyst. Available in both spray and brush.

PLUG MANUFACTURE

Crystic® Primecoat

Crystic® Primecoat is a high build, polyester coating material which allows the rapid surfacing of patterns constructed from materials such as wood, MDF and GRP. It can be applied wet-on-wet up to a thickness of 1.5mm in one operation without sagging or draining from vertical surfaces.

Crystic® Glosscoat

Crystic® Glosscoat is a polyester coating designed to be applied over prepared Crestamould® Primecoat to give a glossier and more durable surface. The material hardens rapidly and can be easily sanded to a smooth surface which can be polished to high gloss.

Crestafix® Fairing Compound

A water resistant, low-density polyester-based fairing compound, Crestafix® F26 has excellent adhesion to cured fibre-reinforced polyester and vinylester laminates. The material sands easily, gives a hard finish after a full cure, yet is not brittle and has good impact strength. Crestafix® F26 is a suitable base for all marine finishes such as polyester, urethane and epoxy paints.

Crestamould® Tooling Paste

Designed for milling of large plugs or direct limited production moulds with CNC multiple axis machines, Crestamould® T29 is a modified polyester compound, available in sprayable or extrudable versions.

Crestamould® Sealer

Laminating with polyester resin on top of polystyrene foams has never been possible despite various impractical methods of protection from preventing the styrene foam from dissolving when in contact with polyester resin. Crestamould® B21 sealing resin solves this problem – just one coat applied by brush will seal the surface and laminating with polyester resins can begin two hours after application.

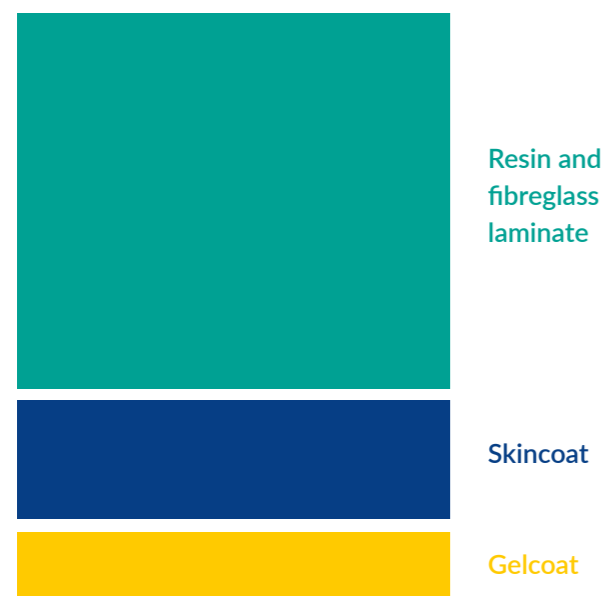


CRYSTIC® MATCHED PERFORMANCE SYSTEMS

If you're looking for the ultimate in aesthetics and blistering resistance then look no further! Over 40 years ago Scott Bader designed the concept of chemically matching the performance of products to work synergistically and successfully tackle the phenomenon of osmosis, or blistering. After decades of commercial use, the benefits of using Crystic® Matched Performance Systems have been shown to extend beyond eliminating blistering:

- Exceptional aesthetics
- Improved strength and rigidity
- Greater strength to weight ratios
- Better fuel economy and performance
- Superior water resistance

Optimum laminate construction



GELCOAT	SKINCOAT	RESIN
Spray application		
LS 30PA	VE690PA	LS 451PA
LS 97PA		2.420PA
	489PA	2.406PA
		2.446PA
Hand lay-up		
LS 31PA	VE690PA	LS 451PA
		2.420PA
LS 88PA	489PA	2.406PA
		2.446PA
Closed mould		
LS 30PA	VE690PA	701PA
LS 31PA		702PA
LS 88PA	489PA	703PA
LS 97PA		VE676-03
		VE679-03PA

Crystic® matched performance range overview

PRODUCT	DESCRIPTION	VISCOSITY (Poise)	GELTIME (mins)*	TENSILE STRENGTH (MPa)*	TENSILE MODULUS (GPa)*	ELONGATION AT BREAK (%)*	APPROVALS
Gelcoats							
LS 30PA	Superior weathering Iso/NPG spray gelcoat	Thix.	9	52	3.4	2.8	Lloyds
LS 31PA	Superior weathering Iso/NPG brush gelcoat	Thix.	9	52	3.4	2.8	Lloyds
LS 97PA	An exceptional isophthalic spray gelcoat with excellent u.v. resistance, gloss retention and water resistance	Thix.	7	51	3.8	2.8	Lloyds
LS 88PA	An exceptional isophthalic brush gelcoat with excellent u.v. resistance, gloss retention and water resistance	Thix.	8	60	3.85	2.8	Lloyds
Skincoats							
VE690PA	Pre-accelerated modified vinyl ester resin to create an enhanced surface finish	Thix.	15	60	2.7	4.3	Lloyds
489PA	Isophthalic skincoat with excellent durability and blister resistance	Thix.	12	76	3.5	4.0	Lloyds
Resins							
LS 451PA	High performance low styrene DCPD modified resin to create an enhanced surface finish	Thix.	20	46	2.7	2.5	Lloyds
2.420PA	Orthophthalic resin with low styrene emission, low exotherm and long geltime	Thix.	63	44	3.7	1.3	Lloyds
2.406PA	Orthophthalic resin with low styrene emission, low exotherm and rapid wet out	Thix.	11	54	3.7	1.7	Lloyds
2.446PA	Orthophthalic resin with low styrene emission, rapid wet out and fast hardening ideal for rapid mould turnaround	Thix.	25	50	3.8	1.5	Lloyds
701PA	Closed mould isophthalic resin with low viscosity and controlled exotherm characteristics	1.6	59	66	3.6	2.5	Lloyds
702PA	Closed mould orthophthalic resin with low viscosity and controlled exotherm characteristics	1.6	40	44	3.9	1.2	Lloyds
703PA	Closed mould DCPD resin with low viscosity and controlled exotherm characteristics	1.6	64	38	3.1	1.3	Lloyds
VE676-03	Closed mould non-accelerated and non-thixotropic epoxy bisphenol vinyl ester resin	1.75	110	75	3.4	4.0	Lloyds
VE679-03PA	Pre-accelerated, non-thixotropic VE/DCPD resin for vacuum infusion	1.85	60	64	3.3	2.3	Lloyds

*A variety of cure systems were used. Results are from a variety of different catalyst systems and cure programs and should be used for indicative comparison only. See individual product datasheets for more information.



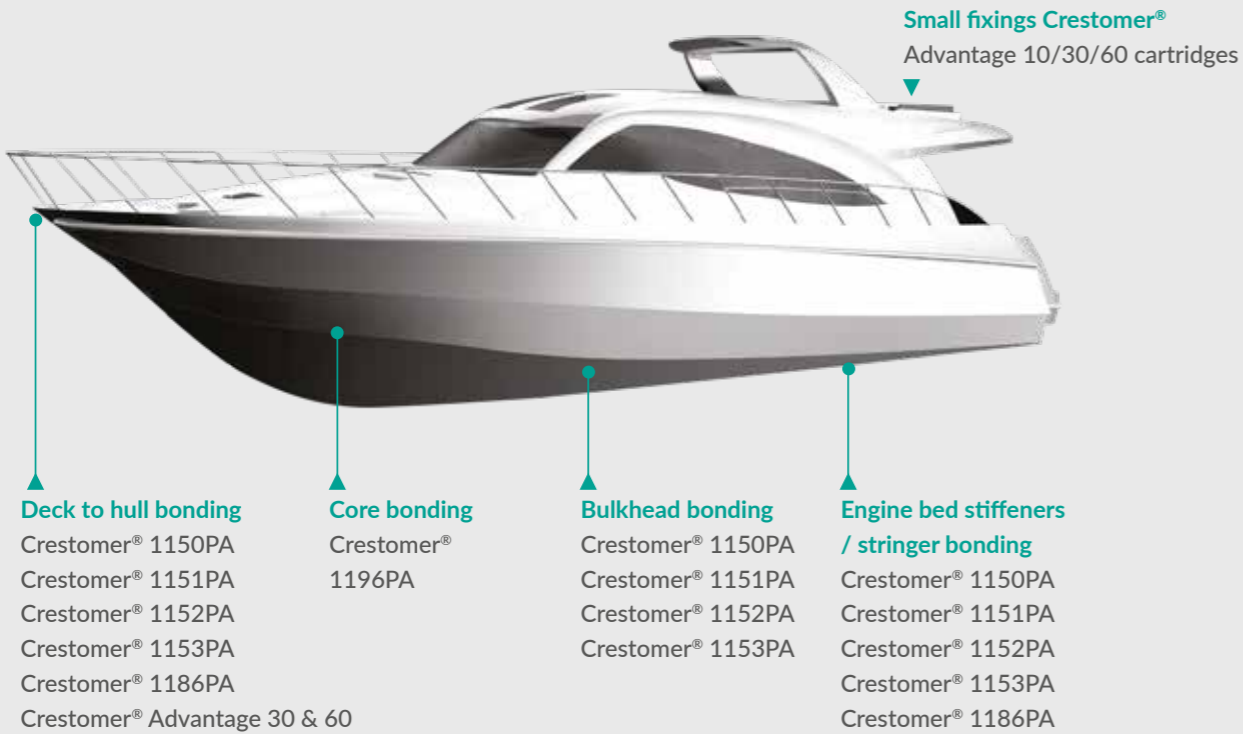
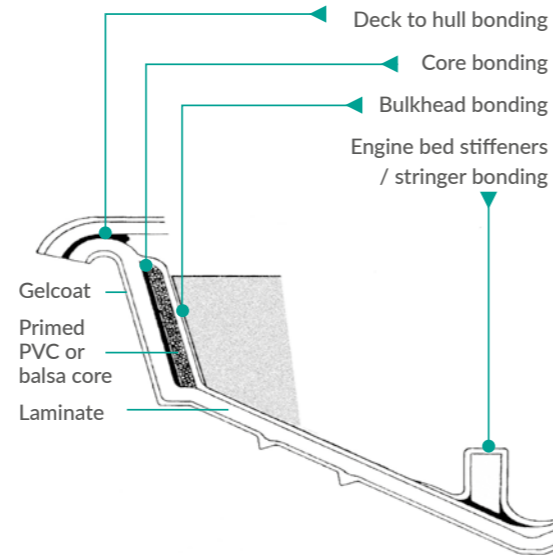
CHECK OUT THE WHOLE CRYSTIC® PRODUCT RANGE

Scott Bader has an extensive gelcoat, resin and pigment paste range, ask your local Scott Bader contact for more details.

CRESTOMER®

Urethane Acrylate Structural Adhesives

Scott Bader is a global company with over 40 years' experience in designing and manufacturing high quality adhesives. Crestomer® products have been successfully used by leading global boatbuilders to improve the performance of their products, to make productivity improvements through time savings in construction and to provide considerable weight savings. The following diagram shows areas where Crestomer® structural adhesives can be used in FRP boatbuilding.



Deck to hull bonding
Crestomer® 1150PA
Crestomer® 1151PA
Crestomer® 1152PA
Crestomer® 1153PA
Crestomer® 1186PA
Crestomer® Advantage 30 & 60

Core bonding
Crestomer® 1196PA

Bulkhead bonding
Crestomer® 1150PA
Crestomer® 1151PA
Crestomer® 1152PA
Crestomer® 1153PA

Engine bed stiffeners / stringer bonding
Crestomer® 1150PA
Crestomer® 1151PA
Crestomer® 1152PA
Crestomer® 1153PA
Crestomer® 1186PA

A record of achievement

The Crestomer® pedigree was established over 40 years ago. The first commercial application for Crestomer® adhesive was in the manufacture of minehunters. The unique properties of Crestomer® ensured peel and crack resistance was significantly improved. Crestomer® is the only successful material specifically designed to meet this demanding application.

Challenging mindsets

Crestomer's outstanding performance record and unique properties have fundamentally challenged conventional thinking among moulders who have been sceptical of the performance possibilities with adhesives. Freed from the constraints of traditional fabricating techniques, FRP moulders are now capitalising on the design flexibility, time and cost savings that structural adhesives can offer. Crestomer® is now used in a wide range of demanding applications across the marine, transport, building and construction sectors within the FRP industry.

Crestomer® product range overview

PRODUCT	DESCRIPTION	APPROVALS	APPEARANCE	WORKING TIME (mins)	FIXTURE TIME (hrs)**	TENSILE STRENGTH (MPa)	TENSILE MODULUS (MPa)	TENSILE ELONGATION (%)	SPECIFIC GRAVITY (g/cc)
1150PA	High performance structural adhesive with shorter fixture time	Lloyds, Class NK	Mauve gel	50*	5	22 - 25	1000 - 1500	100 - 120	1.05
1151PA	Adhesive for bulk application Amine accelerated	Lloyds, Class NK	Green/yellow gel	25**	2.5	22 - 25	1000 - 1500	100 - 120	1.05
1152PA	High performance structural adhesive	Lloyds, RINA, DNV.GL, Class NK	Mauve Gel	50*	10	22 - 25	1000 - 1500	100 - 120	1.05
1153PA	High performance structural adhesive with long open time	Lloyds, RINA, Class NK	Mauve gel	90*	8.5	22 - 25	1000 - 1500	100 - 120	1.05
1186PA	Multi-purpose structural adhesive	Lloyds	Grey paste	50*	5.5	13 - 16	700 - 900	4 - 7	1.30
1196PA	Low density structural core bonding adhesive	Lloyds, DNV.GL	Pink paste	50*	6.5	19 - 22	1000 - 1500	4 - 7	0.60
Advantage 10	High performance structural adhesive for bonding a wide range of substrates. Minimal surface preparation required. Pre-packed in cartridges	Lloyds	White paste	10	1.2	22 - 25	400 - 600	100 - 120	1.15
Advantage 30		Lloyds, RINA, DNV.GL	White paste	30	2.5	22 - 25	400 - 600	100 - 120	1.15
Advantage 60		Lloyds	White paste	60	3.0	22 - 25	400 - 600	100 - 120	1.15

Crestomer® dispensing equipment

- Crestomer® Advantage 10, 30 and 60 cartridges can be used with a manual or pneumatic gun. Suitable dispense guns and static mixers are available from Scott Bader
- Crestomer® adhesives can be dispensed directly from pails and drums using a manual or automated dispensing machine/ putty gun
- Scott Bader technical support can provide advice on appropriate dispensing equipment

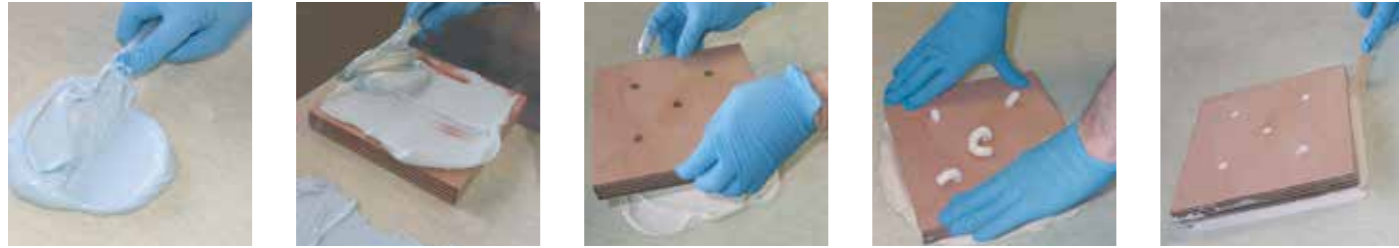


*2% medium reactivity MEKP at 25°C **2% Perkadox® BT-50 at 25°C ***Time taken at 23°C to achieve 1.4MPa strength in lap-shire tests according to BS ISO 4587

CRESTAFIX®

Polyester, Vinyl Ester and Hybrid Bonding Pastes

Bonding pastes are designed specifically for applications requiring a high performance adhesive. The Crestafix® range has been carefully formulated to ensure ease of application, while retaining exceptional handling properties.



OUR RANGE OF BONDING PASTES

General purpose

Materials suitable for non-structural GRP applications. The extensive range includes both orthophthalic and isophthalic bonding pastes with a variety of features, ensuring customers can find the right material for their application.

Fast cure

Materials suitable for non-structural GRP applications that cure very rapidly for either repair or fast assembly applications.

Low density

Also referred to as a core bonder, a low density paste is used to bond polyester laminates and to also to bond polyester laminates to balsa, PVC and PU core materials in sandwich structures.

Fibre filled

Bonding pastes containing short glass fibres to maximise bonding strength and provide excellent gap filling and bridging properties.

High performance

These materials are formulated with the addition of unique Scott Bader urethane acrylate polymers, providing improved fatigue resistance and bonding strengths, particularly when compared to general purpose bonding pastes. These materials can be used for some structural applications.

Fairing compounds

Bonding pastes which are smooth, fast setting and easily sandable. They are used for smoothing out rough fibreglass surfaces.



Crestafix® adhesive product range overview

CATEGORY	NAME	DESCRIPTION	WORKING TIMES (mins)*	COLOUR CHANGE	TENSILE ELONGATION (%)	LAP SHEAR STRENGTH (MPa)**	SPECIFIC GRAVITY (g/cc)
GENERAL PURPOSE	B39W	Pumpable polyester-based bonding paste with gap filling properties	55	None (grey)	1	4	1.05
	90-82PA	General purpose orthophthalic bonding paste	12	Blue to white	2	5	1.35
HIGH PERFORMANCE	621CC 45	Urethane acrylate/ isophthalic polyester bonding paste	25	Blue to grey	3	10	1.25
	621CC 85	Urethane acrylate/ isophthalic polyester bonding paste	50	Blue to grey	3	10	1.25
	630PA	Vinyl ester bonding paste	60	Deep purple to brown	3	7	1.10
FAST CURE	90-78PA	Fast cure orthophthalic bonding paste	8	None (white)	1	5	1.30
LIGHT WEIGHT	90-84PA	Lightweight orthophthalic bonding paste with low exotherm	30	Blue to cream	6	4	0.60
FIBRE FILLED	90-80PA	Polyester bonding paste with short fibres	12	Blue to grey	2	4	1.25
CORE-BOND	B72R	Lightweight, polyester-based core adhesive for foams and balsa	55	Blue to white	2	5	0.70
FAIRING COMPOUND	F26R	Fast setting polyester-based fairing compound with good sanding properties	3	None (light pink)	1	2	0.70

Bonding pastes dispensing equipment

- Pails and drums can be dispensed using an automated 50:1 dispensing machine
- Scott Bader technical support can provide advice on appropriate dispensing equipment and catalyst usage



*1-2% medium reactivity MEKP @25°C Refer to TDS for specific catalyst levels
**Values are based on substrate failure

CRESTABOND®

Primerless MMA Structural Adhesives

A toughened, two component acrylic adhesive designed for bonding composites, thermoplastics and metals, making it ideal for the marine industry.

Key information:

CRESTABOND® FEATURES	CUSTOMER BENEFITS
Primerless adhesives	Dramatically enhances production efficiency and reduces consumable costs
Minimal surface preparation	Reduces dust emissions and preparation time
Excellent fatigue and impact resistance	Confidence in the longevity of the finished product
Range of working and fixture times	Optimises production cycles to reduce manufacturing costs
Good gap filling capability	Adhesive can be used in multiple applications
Bonds dissimilar substrates	Provides flexibility in structural designs

Crestabond® dispensing equipment

- The Crestabond® cartridges can be used with a manual or pneumatic gun. Suitable dispense guns and static mixers are available from Scott Bader
- Crestabond® adhesives can be dispensed directly from pails and drums using an automated 1:1 or 10:1 dispensing machine
- Scott Bader technical support can provide advice on appropriate dispensing equipment



Crestabond® pack sizes

Cartridges

- M1 (10:1) range
- 50ml side-by-side
 - 400ml coaxial
 - 825ml side-by-side

M7 and PP (1:1) Range

- 50ml side-by-side
- 400ml side-by-side

Bulk

- 20 Litre/ 18kg pails
- 200 Litre/ 180kg drums



Crestabond® adhesive selection guide

1 Choose the appropriate Crestabond® adhesive product with optimal working and fixture times that will ensure long-term adhesion and durability.

PRODUCT	DESCRIPTION	COLOUR	MIX RATIO BY VOLUME	VISCOSITY (cP)	WORKING TIME (mins)	FIXTURE TIME (mins)*	TENSILE STRENGTH (MPa)	TENSILE MODULUS (MPa)	ELONGATION AT BREAK (%)	GAP FILL (mm)
M1-02	Universal bonder	Dark grey	10:1	100,000 - 140,000	1 - 2	2 - 3	12 - 16	600 - 1000	80 - 100	1 - 15
M1-04	Universal bonder	Dark grey	10:1	100,000 - 140,000	3 - 5	8 - 10	16 - 20	600 - 1000	80 - 100	1 - 15
M1-05	Universal bonder	Dark grey	10:1	100,000 - 140,000	4 - 7	12 - 18	16 - 20	600 - 1000	80 - 100	1 - 15
M1-10	Universal bonder	Dark grey	10:1	100,000 - 140,000	8 - 12	16 - 23	16 - 20	600 - 1000	80 - 100	1 - 15
M1-20	Universal bonder	Dark grey	10:1	100,000 - 140,000	16 - 22	25 - 35	16 - 20	600 - 1000	80 - 100	1 - 25
M1-30	Universal bonder	Dark grey	10:1	200,000 - 240,000	25 - 35	60 - 80	18 - 22	600 - 1000	100 - 130	1 - 50
M1-60HV	Universal bonder	Green	10:1	340,000 - 380,000	50 - 70	150 - 180	22 - 26	1200 - 1600	50 - 70	1 - 50
M1-90HV	Universal bonder	Green	10:1	340,000 - 380,000	80 - 100	210 - 240	22 - 26	1200 - 1600	50 - 70	1 - 50
M7-04	Universal bonder	Off white	1:1	30,000 - 70,000	3 - 5	12 - 15	22 - 25	1200 - 1700	6 - 10	1 - 5
M7-05	Universal bonder	Off white	1:1	30,000 - 70,000	4 - 7	18 - 22	22 - 25	1200 - 1700	25 - 30	1 - 5
M7-15	Universal bonder	Off white	1:1	30,000 - 70,000	10 - 20	30 - 45	22 - 25	1200 - 1700	25 - 30	1 - 5
PP-04	Low surface energy bonder	Off white	1:1	70,000 - 140,000	3 - 5	165 - 180	12 - 17	800 - 1200	2 - 5	0.5 - 5

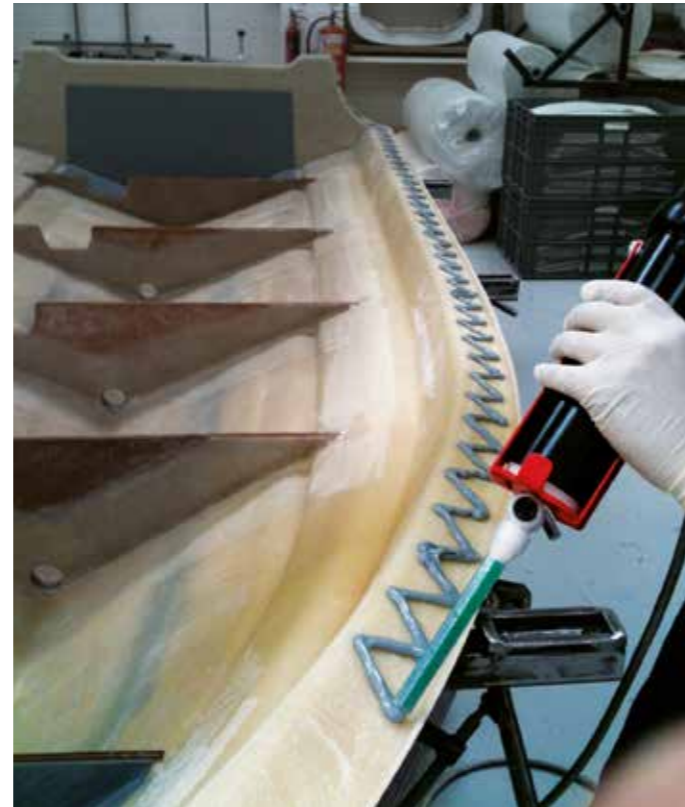
Based on laboratory results

*Time taken at 23°C to achieve 1.4MPa strength in lap shear tests according to BS ISO 4587

2 Check the adhesive bonds the required substrates:

- Composites
- Metals
- Plastics
- Galvanised

3 Arrange a demonstration or trial by contacting your local Scott Bader representative or emailing enquiries@scottbader.com



PRODUCT	COMPOSITES	METALS					PLASTICS				
	GRP	STAINLESS STEEL	ALUMINIUM	POWDER COATED STEEL	COLD ROLLED STEEL	GALVANISED	ABS	ACRYLIC	POLYCARBONATE	PVC	PP/PE & TPO
M1 range	●	●	●	●	●		●	●	●	●	
M1 HV	●	●	●	●	●		●	●	●	●	
M7 range	●	●	●	●	●	●	●	●	●	●	
PP-04	●	●	●	●	●		●	●	●	●	●

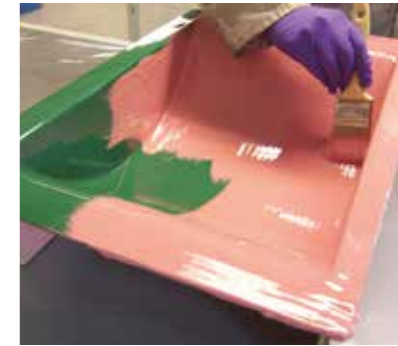
MOULDGUARD

CRYSTIC® MOULDGUARD

Crystic® Mouldguard is a tough temporary coating specially designed for protecting moulds and mouldings. Often, decommissioned moulds are stored outside where they are subjected to standing water, UV light, dirt and frost so they become damaged or scratched. Many hours are usually wasted repairing moulds, cleaning and polishing the gelcoat surface ready for re-use. Most moulders would agree that they rarely achieve the same quality of surface that they had before being decommissioned. Crystic® Mouldguard offers a simple solution.

Benefits of Mouldguard

- Protects moulds and mouldings from damage, so eliminating the need for costly repairs
- Significant time and cost savings are made in labour and materials as moulds can be back in production in a fraction of the time
- Easy to apply, simply add 2% MEKP catalyst and brush or spray a single coat onto mould surface, which must have release agent
- Can be used for new moulds – they will need sealing first and release agent applied*
- Brush and spray versions available
- Quick curing
- Easy to remove, simply peel and roll off the Mouldguard from the surface it is protecting
- Prevents air, moisture, dirt, UV light and frost from attacking the mould surface
- Weather resistant in warm or wet conditions for over 12 months
- Tougher than water-based coatings
- Moulds can be covered with Crystic® Mouldguard and left outside for long periods of time



TYPICAL PROPERTIES		
PROPERTY	UNIT	LIQUID
Appearance		Pink Coloured
Viscosity @ 25°C		Thixotropic
Specific gravity @ 25°C		1.12
Volatile content	%	29
Stability in the dark @ 20°C	Months	3
Geltime (@ 25°C using 2% medium reactivity MEKP)	Minutes	15

*See separate data sheet and application guide

GELTINT

Rapid Colour

GelTint is our fast, precise colour matching service for top quality gelcoats, highly recommended for use in the marine industry where it is also used in general moulding requirements. GelTint machines are installed all over the world enabling us reach more global customers.



Fast

With an expanding network of dispensing machines, we can offer rapid turnaround of the industry leading range of Crystic GelTint gelcoats, providing a wide range of colours and bases quickly and efficiently.



Precise

The GelTint machine automatically dispenses a precise volume of colourant into each batch for a very high batch to batch consistency.



Resilient

GelTint uses gelcoats renowned for their long term resistance to weathering, with low colour change and high gloss retention.



Benefits of GelTint

- GelTint products packaging contain sustainable plastic liners providing cheaper, more environmentally friendly waste disposal
- Easier manual handling due to a reduced keg size of 20 L
- Wide range of colours these include RAL, NCS, British Standard and our own custom Scott Bader colours
- No minimum order quantity ideal for customers requiring anything from a single to multiple kegs
- High quality products with Lloyd's Approval for Marine: GT-600, GT-640 & GT-900
- Excellent batch to batch consistency
- Fast service
- Reduced stock levels



PRODUCT RANGE

GelTint Bases

GelTint has a selection of bases available to satisfy all markets. The current bases available in GelTint:

Isophthalic Gelcoats*

GT-600: Isophthalic Gelcoat for Brush Application

GT-640: Low Viscosity Isophthalic Gelcoat for Brush Application

GT-900: Isophthalic Gelcoat for Spray Application

*Products with Lloyd's approval for Marine

Iso-NPG Gelcoats

GT-1000: Iso-NPG Gelcoat for Spray Application

Topcoats

Topcoat versions are available in all bases

Colourants

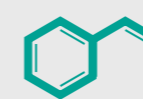
Dispense colourants from the RAL, Bs and NCS standards

GelTint Colourants

The colourants are formulated with new pigmentation technology. They are:



Low hazard



Styrene-free



Lead-free



Robust in Colour Durability



Recommended Markets

- Marine*
- Land Transport
- Building Applications
- General Moulding Requirements



Call our Technical Support line on:

+44 (0)1933 663100

www.scottbadergeltint.com

*We do not recommend the use of coloured gelcoats below the DWL and we do not recommended for repairs.

SCOTT BADER GROUP COMPANIES



Head Office
Scott Bader Company Limited
Wollaston, England
Tel: +44 (0) 1933 663100
Email: enquiries@scottbader.com

Scott Bader France
Amiens, France
Tel: +33 3 22 66 27 66
Email: enquiries@scottbader.com

Scott Bader Spain
Barcelona, Spain
Tel: +34 93 583 17 68
Email: enquiries@scottbader.com

Scott Bader Germany
Weiden, Germany
Tel: +49 961 401 84474
Email: enquiries@scottbader.com

Scott Bader Ireland
Dublin, Ireland
Tel: +353 1801 5656
Email: enquiries@scottbader.com

Scott Bader Scandinavia
Falkenberg, Sweden
Tel: +46 346 10100
Email: enquiries@scottbader.com

Scott Bader Eastern Europe s.r.o.
Praha 6, Czech Republic
Tel: +420 (0) 485 111 253
Email: enquiries@scottbader.com

Scott Bader Croatia
Zagreb, Croatia
Tel: +385 1 240 6440
Email: enquiries@scottbader.com

Scott Bader North America
Mocksville, NC, USA
Email: info@scottbader-na.com

Scott Bader ATC
Drummondville, Canada
Tel: +1 (819) 477 1752
Email: enquiries@scottbader.com

Scott Bader South Africa
Hammarsdale, South Africa
Tel: +27 31 736 8500
Email: enquiries@scottbader.com

Scott Bader Middle East
Dubai, United Arab Emirates
Tel: +971 481 50 222
Email: enquiries@scottbader.com

Scott Bader Asia Pacific
Shanghai, China
Tel: +86 (21) 5298 7778
Email: enquiries@scottbader.com

Scott Bader Japan KK
Yokohama, Japan
Tel: +81 (0) 45 620 3745
Email: Otoiawase@scottbader.com

Scott Bader Australia
Perth, Australia
Tel: +61 (08) 9418 4555
Email: enquiries@scottbader.com

Scott Bader India
Scott Bader Pvt. Ltd, Mumbai, India
Tel: +91 22 4220 1555
Email: enquiries@scottbader.com

NovaScott Especialidades Químicas Ltda
Civit II, Serra, ES 29165-973, Brazil
Tel: +55 27 3298 1100
Email: enquiries@scottbader.com

Scott Bader Italy
Emilia Romagna, Italy
Tel: +39 3454534391
Email: enquiries@scottbader.com

Scott Bader Turkey
Istanbul, Turkey
Email: enquiries@scottbader.com



INVESTORS IN PEOPLE®
We invest in people Gold

Issue 3 - March 2023



SCOTTBADER.COM